

Cuisinart®

Grind & Brew

DGB600BCU



Congratulations on your purchase of the Cuisinart Grind & Brew.

For over 30 years Cuisinart's aim has been to produce the very finest kitchen equipment so that cooks at home as well as professional chefs have the tools to express their creativity.

All Cuisinart products are engineered for exceptionally long life, and designed to be easy to use as well as to give excellent performance day after day. That is why they have come to be regarded as the defining machines in their field by chefs across the world.

Whatever you cook, cook it better with Cuisinart.

Contents

Product Description	5
Safety Cautions.	6
Programming	8
A Setting the Clock	8
B Setting the Programme Time	9
Instructions for Use	11
A Preparing to Brew	11
Inserting the Filter	11
Adding Water & Coffee Beans	11
Preparing the Carafe	12
B Grinding & Brewing Coffee	13
Immediate Brewing	13
Programmed Brewing	13
Brewed Coffee	13
C Brewing 1- 4 cups	14
D Brew Coffee with Pre-ground Beans	14
Cleaning & Maintenance	15
Descaling	16
Guarantee	17
UK After Sales Service	18

Product Description



Read all the instructions thoroughly before using the appliance and keep in a safe place for future reference


Safety Cautions

Always follow these safety cautions when using this appliance to avoid personal injury or damage to the appliance. This appliance should be used only as described within this instruction book.

- Do not immerse housing unit in water or any other liquid or put in a dishwasher.
- Never pull the plug out of the mains socket by the lead.
- Do not allow the lead to overhang the kitchen table or worktop.
- Do not allow lead to touch hot surfaces.
- This appliance should not be used by adults or children whose lack of experience, product knowledge or disability might cause a hazard, unless they have been correctly instructed and are adequately supervised.
- Children should always be supervised to ensure that they do not play with this product.
- Do not use this appliance if the lead is damaged. In the event of damage, discontinue use immediately. If the lead is damaged it must be replaced by a special lead available from the manufacturer or its service agent. (See “UK After Sales Service” section).
- Do not use the appliance if it has fallen or shows signs of damage or cuts out in use. Discontinue use immediately and contact Cuisinart After Sales Service for further advice.
- No repair can be carried out by the user. Return the appliance to “Cuisinart Service Centre” for inspection or repair / replacement (See “UK After Sales Service” section).
- Use this appliance for grinding coffee beans as described within the instructions for use which accompany it. Please retain these for future reference.

- For indoor use only.
- For domestic use only.
- Always ensure that your hands are dry before removing the plug from the mains socket.
- This appliance complies with the basic requirements of Directives 04/108/EEC (Electromagnetic Compatibility) and 06/95/EEC (Safety of domestic electrical appliances) amended by Directive 93/68/EEC (CE Marking).
- Always ensure the voltage to be used corresponds with the voltage on the appliance, which is indicated on the bottom of the motor unit.
- Do not use any attachments other than those recommended or sold by Cuisinart.
- This appliance should not be used by adults or children whose lack of experience, product knowledge or disability might cause a hazard, unless they have been correctly instructed and are adequately supervised.
- Children should always be supervised to ensure that they do not play with this product.
- **WARNING:** A cut off plug inserted into a 13 amp outlet is a serious safety (shock) hazard. Ensure the cut off plug is disposed of safely.
- **WARNING:** Polythene bags over the product or packaging may be dangerous. To avoid danger of suffocation, keep away from babies and children. These bags are not toys.



- The symbol  on the product or on its packaging indicates that this product may not be treated as household waste. Instead it should be handed over to the applicable collection point for the recycling of electrical and electronic equipment. By ensuring this product is disposed of correctly, you will help prevent potential negative consequences for the environment and human health, which could otherwise be caused by inappropriate waste handling of this product. For more detailed information about the recycling of this product, please contact your local council office or your household waste disposal service.

Programming

A Setting the Clock

When the grind and brew is plugged in, “12:00” will appear until you set the time.

Entering “Time Set” mode:

To set the time, press and hold either the “Hours” or “Minutes” button until the clock begins to flash. This signals that you have entered the “Time set” mode. The desired time can be set by pressing the “Hours” and “Minutes” buttons to scroll forward through the digits. The buttons can be held down to scroll through the digits, or pressed and released lightly to advance one digit at a time.

N.B. Be careful to make sure that the “PM” indicator is on if a “PM” time is desired.

Exiting “Time Set” mode:

There are 2 ways to exit the “Time Set”:

- Press any button besides the “Hours” or “Minutes” button. This will exit the “Time Set” mode and activated the selected function.
- Do not press any of the buttons on the control panel. If neither “Hours” nor “Minutes” button is pressed for a period of 5 seconds, the “Time Set” mode will be exited automatically.

B Setting the Programme Time

This feature allows you to pre-programme brewing for the desired time. By pressing the 'Programme' button the digital display shows the current program time. This default setting is 12.00pm.

Entering “Set Programme Time” mode:

Press and hold the “Programme Set” button until the green light and LCD display begin to flash, this signals that you have entered the “Set Programme Time” mode. The desired time can be set by pressing the “Hours” and “Minutes” buttons to scroll forward through the digits. The buttons can be held down to scroll through the digits or pressed and released lightly to advance one digit at a time. Once set, press 'programme' again, the coffee maker will start to brew at the programmed time.

N.B. The “Programme” mode cannot be entered if the coffeemaker is in a “brew” cycle.

Exiting “Set Programme Time” mode:

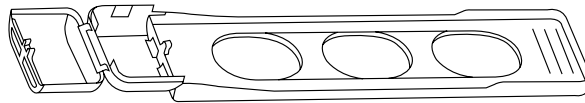
There are 2 ways to exit the “Set Programme Time”:

- Press the “Programme” button, the time entered will be set and the coffeemaker will revert to its previous state. If it was OFF, it will return to the OFF position. If “Programmed” it will revert to this state, and so on. This is a safety feature.
- Press any other button (except “Hours” or “Minutes”). “Set Programme Time” mode will be exited and the function of that button will be activated. No programmed time will be set.
- Leave the control. If neither “Hours” nor “Minutes” button is pressed for a period of 5 seconds, the “Set Programme Time” mode will be exited automatically, no programmed time will be set.

Inserting the Charcoal Water Filter

N.B. Your appliance is supplied with two charcoal water filters.

It is strongly recommended that the water filter is replaced after 90 days or 90 uses; more often if you have hard water. Failure to do so can lead to a build-up of limescale and affect the performance of your appliance. Replacement filters can be purchased directly from the manufacturer, (see “UK After Sales Service” section for further details).

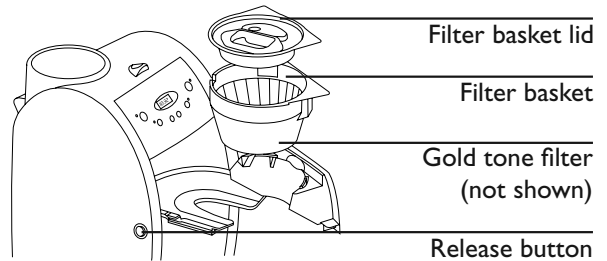
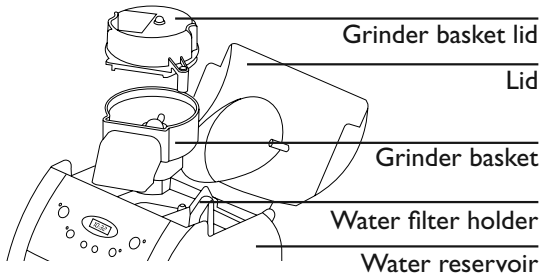


- Remove the filter from its packaging and soak in cold tap water for 15 minutes.
- To remove the water filter holder, simply lift it out from its opening on the inner wall of the reservoir.
- Hold stem in one hand. With your other hand, gently press the compartment door down and pull outwards to flip open.
- Place the filter in the holder and close the compartment cover; you will hear a snap indicating filter is in place. **N.B.** Caution must be used when inserting the charcoal filter. Improper placement in the holder can cause tearing of the filter skin.
- Hold the filter under cold running tap water for 10 seconds to flush. Hold the water filter holder horizontally, directly under the water stream so that the water flows through the filter compartment.
- Allow the filter to drain completely.
- Replace the water filter holder into its opening on the inner wall of the reservoir, pushing it all the way down to the base of the unit.

Instructions for Use

A Preparing to Brew

N.B. Before making coffee for the first time, we recommend operating the appliance once, using only water, to remove any dust or residue that may remain in the system from the manufacturing process.



Inserting the Filter

- Press the filter release button and remove the filter lid. When removing the filter lid (especially after brewing) use the tab with the marking “lift” to do so as parts may be hot after use. Ensure the gold tone filter is positioned with the handle facing away from main body of the appliance. N.B. If the handle is not facing away, it may interfere with the flow of ground coffee into the filter basket. Place the filter basket lid in place, ensuring that the side with the marking ‘front’ is against the filter compartment door, and close the filter compartment door.

Adding Water & Coffee Beans

- Open the lid of the Grind & Brew by pushing the release button and lifting upwards. Lift the grinder basket lid, using the recess on either side taking care not to dislodge the grinder basket. Fill the basket with the desired quantity of beans. Using the scoop provided, measure 1 level scoop of whole beans per cup. For 1 to 4 cups, use 1-1/2 level scoops per cup. Replace the grinder basket lid.

WARNING: Maximum capacity is 14 level scoops. Do not over fill or you may damage the grinder and/or the appliance may overflow.

- Once the grinder basket lid has been closed, carefully fill the water reservoir with the desired amount of water, up to 10 cups, using the graduated water level indicator located at the rear of the reservoir.
IMPORTANT: Take extra care not to spill water around the grind chamber. In the event that some water is spilled in the chamber, dry thoroughly before use.
- Close the lid until an audible click is heard.

N.B. If the lid is not locked into place, or the grinder cover is left out, the appliance will not operate. If you try to turn the unit on with the lid open the appliance will beep continuously until the missing parts are installed and you close the lid. The unit will also beep if you open the lid during the brewing process. The grinder will stop grinding or, if brewing, the brewing will stop. Once the missing parts are installed and the lid is closed, the beeping will stop. The brewing process can be restarted by pressing the “0/1” button.

Restarting the process will not affect coffee results. If you do not want the grinder to restart, press the “Grind off” button before pressing the “0/1” button. Once the lid is closed, the beeping will stop, and the grind and brew process will start again from the beginning.

Preparing the Carafe

- Remove thermal carafe lid by turning in the direction of the “unlock” arrow. Pre-warm the carafe by rinsing it out with hot water. **N.B.** This will help keep the coffee hotter for longer.
- Return the carafe lid to the carafe. To lock, align the arrows on the lid and the carafe and turn in a clockwise direction until the lid fits tightly on carafe and the arrow lines up in the centre of the spout. This ensures the lid is locked into place and in the correct position for brewing and pouring.
- Replace the thermal carafe in its position on the resting plate. Plug the appliance into the mains.

B Grinding and Brewing Coffee

Now the coffee machine is ready to grind and brew.

Immediate Brewing

To start the appliance immediately, press the “0/1” button. The indicator light will illuminate and the process will begin.

Programmed Brewing

To set the appliance to start at a programmed time, refer to “Set Programme Time” section B.

Brewed Coffee

- When the brewing cycle has completed, 5 beeps will sound.
- The brew-through, pour-through lid allows coffee to drip from appliance through the closed lid. When brewing is complete, the lid seals itself with a valve so air stays out and coffee freshness and temperature are maintained. There is no need to turn or adjust the lid before pouring.
- After brewing, the appliance will automatically shut off. The thermal carafe will keep the coffee hot for hours.
- The ‘Brew Pause’ feature allows you to remove the carafe during mid-brew. The brewing process does not stop during this period, only the flow of coffee from the basket to the carafe stops.
WARNING: do not remove the carafe for longer than 30 second or the coffee may overflow the basket.

N.B. Whilst we offer this feature for your convenience, we do not recommend that you pour coffee before the cycle has reached completion, since the coffee brewed at the beginning of the cycle has a very different flavour profile to that made at the end of the cycle. Removing a cup during the cycle will alter the flavour of the finished pot.

CAUTION: The bottom of the thermal carafe is hot to touch for several minutes after brewing.

C Brewing 1 - 4 cups

This function brews the coffee at a slower rate to extract maximum flavour from the coffee for a more rounded flavor in just 1 - 4 cups

- Add 1-1/2 scoops coffee beans per cup to the grind chamber fit the grinder lid.
- Pour 1 - 4 cups water into the reservoir and close the lid.
- Press the “1 - 4 cups” button, followed by the “0/1” button and brewing will begin.

D Brewing Coffee with Pre-ground Beans

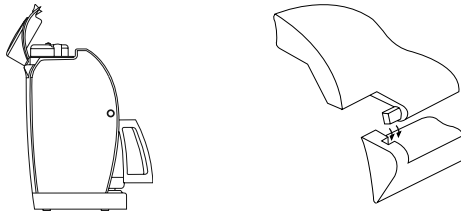
This appliance can also brew coffee using pre-ground beans. We recommend using 1 level scoop of ground coffee per cup.

N.B. The maximum capacity for ground coffee is 16 scoops. Exceeding this may cause the appliance to overflow.

- Scoop the ground coffee into the gold tone filter. Place the filter basket lid in place and close the filter compartment door.
- Add the water as described previously in section “Preparing to Brew”
- Prepare the carafe as previously described in “Preparing the Carafe” section
- Plug the appliance into a suitable mains socket and set the timer as described in “Setting the Timer” section.
- Turn off the grinding function, by pressing the “Grind Off” button, an amber light will illuminate, then press the “0/1” button, brewing will begin.

Cleaning & Maintenance

- Completely clean and dry all parts after every use.
- Always turn the appliance off and remove the plug from the mains outlet before cleaning.
- Open the reservoir lid. Remove the grinder basket lid by using the recesses on each side of the lid. Then remove grinder basket by lifting directly upwards. Open the filter compartment and remove the filter basket lid and gold tone filter.
- The grind basket, grinder basket lid, gold tone filter, filter basket and filter basket lid can be washed in warm soapy water and rinsed thoroughly, or cleaned in the upper rack of the dishwasher. Clean and thoroughly dry all parts after every use.
- The reservoir lid can be removed for easy cleaning, see diagram below. Open the lid 60° and gently pull toward you. To replace, hold at 60° and gently push into position.



- Do not put any water in the unit once the grinder basket has been removed. Wipe the area under the grinder basket with a damp cloth or the cleaning brush provided. If water gets into the grinder motor, the motor may become damaged and may malfunction.
- Once clean and dry, replace all the parts.
- Remove the carafe from the resting plate. Discard any remaining coffee. The carafe and lid can be washed in warm soapy water and rinsed thoroughly, or placed in a dishwasher, on the upper rack only.

- Do not use scouring agents or harsh cleaning agents on any part of the appliance.
- Never immerse the main housing unit in water or other liquid. To clean the base, simply wipe with a clean damp cloth and dry before storing.
- Wipe resting plate with a clean, damp cloth. Never use rough, abrasive materials or harsh cleaning agents to clean the resting plate.
- Do not dry the inside of the water reservoir with a cloth as lint may remain.

Descaling

- Always use the charcoal water filters provided and replace on a regular basis (i.e. every 90 days or 90 uses)
- It is strongly recommended that you descale the appliance from time to time. The frequency depends upon the hardness of your tap water and how often you use the appliance.

To descale

- Fill the water reservoir completely with a mixture of 1/3 white vinegar and 2/3 water and switch the appliance on. One cycle should be sufficient to descale the appliance.
- Once the cycle has been completed and 5 beeps sound, switch the appliance off. Repeat the cycle once more using cold tap water.

Guarantee

- This Cuisinart appliance is guaranteed for domestic consumer use for 3 years.
- The guarantee covers defects under normal use from date of purchase and ceases to be valid in the event of alteration or repair by unauthorized persons.
- If the appliance does not perform satisfactorily due to defects of material or manufacture, it will be repaired or replaced by the manufacturer (see UK after sales service for details).
- This guarantee is only valid in the United Kingdom (including Northern Ireland, Republic of Ireland, the Channel Islands and the Isle of Man).
- No responsibility will be accepted for any damage caused in transit.
- A charge may be made if goods are returned outside the relevant guarantee period or if the product is returned unnecessarily.
- The manufacturer reserves the right to amend terms and specifications without prior notice.
- This guarantee in no way affects your statutory rights.

The Cuisinart logo is displayed in white text on a black square background.

UK After Sales Service

For further advice on using your Cuisinart Grind and Brew and other products in the Cuisinart range, contact the Cuisinart Customer Care Line on 0870 240 6902 (09:00 to 17:00 hrs Monday to Friday) or, alternatively, email your enquiry to support@cuisinart.co.uk

In Guarantee

Return the product to the Cuisinart Service Centre at the following address:

Cuisinart Service Centre
P.O. Box 506
WIGAN
WNI 9AA

Enclose your name and address, together with proof of purchase and details of the fault. Cuisinart will either repair or replace the product, as appropriate.

Out of Guarantee

Contact the Cuisinart Customer Care Line on 0870 240 6902 (09:00 to 17:00 hrs Monday to Friday) or, alternatively, email your enquiry to support@cuisinart.co.uk for details of the standard repair or replacement charge. If you wish to proceed with the repair or replacement, return the product to the Cuisinart Service Centre at the following address:

Cuisinart Service Centre
P.O. Box 506
WIGAN
WNI 9AA

www.cuisinart.co.uk

Version no: DGB600BCU IB-4/336C

SIZE:180mm(W) X 180mm(H)
Total Pages:20pp

Material:157gsm B/S Gloss art paper (whole book)
Cover:
Inside:

Coating: waterbase varnishing for whole book

Color:1C+1C(black)
Cover:
Inside:

Die cut:old same as DGB600BCU IB-4/336A

Bar Code:

Date:06/28/08 (00)

Coordinator: Alice Chong